

■ SI-219 PROBEAM 191

■ SI-220 PROBEAM 231

■ SI-221 PROBEAM 281



The PROBEAM is a new series of stylish moving head beam in a very compact and lightweight housing. It delivers high light output and even coverage field. The fixture is integrated with a full complement of professional characteristics including a static gobo wheel, color wheel, 3 kinds of prism effect, frost filter, motorized linear focus, variable speed shutter/strobe, 0-100% linear dimmer, color time and gobo time controllable.

The PROBEAM supports DMX, RDM (Remote Device Management). Art-Net protocol and Wireless Solution wireless system built-in are optional.

The lamp equips with the reflector built-in, providing perfect lamp alignment. The moving heads feature ultra sharp beam effect with low consumption realized

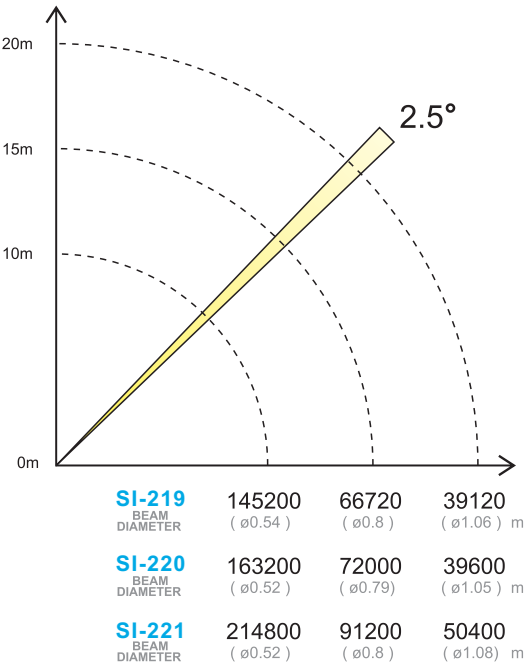
following lamps:

- 1\*OSRAM SIRIUS HRI 191W Lamp (SI-219)
- 1\*OSRAM SIRIUS HRI 231W Lamp (SI-220)
- 1\*OSRAM SIRIUS HRI 281W Lamp (SI-221)

The fixture's exterior housing is beautifully balanced basing on a modern design philosophy with supremely harmonious interior structure for remarkable control. The sculpted body of the PROBEAM achieves more than just a striking look. The head cover are locked with 4\*1/4 turn fastening, easy for maintenance. The 2\*1/4 turn fastening omega clamps, available for vertical and horizontal plug-in, make installations fast and easy. It provides friendly PAN/TILT locks for safety during transportation.

It's applicable for large scale live concerts, TV productions, road shows, clubs, etc.

PHOTOMETRICBEAM ANGLE DATA  
(FC=LUX × 0.0929)



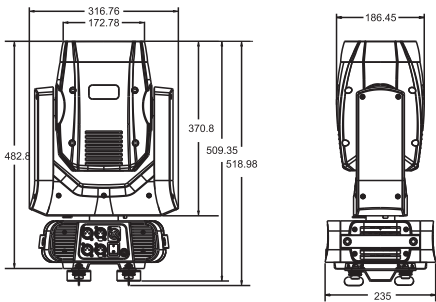
Features

- > 1\*OSRAM SIRIUS HRI 191W Lamp (SI-219)
- > 1\*OSRAM SIRIUS HRI 231W Lamp (SI-220)
- > 1\*OSRAM SIRIUS HRI 281W Lamp (SI-221)
- > 2000 hours rated lamp source
- > Electronic ballast and power supply
- > Smooth and precise resolution for PAN/TILT movement
- > 540°PAN and 270°TILT movement optional
- > Scan position memory, auto reposition after unexpected movement
- > 2.5° Beam angle
- > Improved optics and flat beam field
- > No need for adjustment of reflector or lamp
- > Anti-reflection 136mm front lenses
- > 1 Static gobo wheel with 16 gobos plus open
- > 1 Color wheel with 11 colors plus open
- > Variable direction rainbow effect with speed adjustable
- > Motorized focus from near to far
- > 16-facet prism with variable speed and direction
- > 16-Facet+8-facet prism with variable speed and direction
- > Combined prism effect by 16-facet prism and 16-Facet+8-facet prism with variable speed and direction
- > Frost filter available (Hybrid effect for wash)
- > Dual flag mechanical dimming system
- > 20T/sec high speed LED shutter/strobe effect with variable speed
- > Preset variable/random strobe and dimming pulse effect
- > 14/16 DMX channels USITT DMX-512
- Vector mode with blackout MIB function
- DMX512, master-slave and sound activated controllable or auto operation
- Sound control with sensitivity adjustment
- RDM available (Remote Device Management)
- Art-NET as optional
- Wireless Solution's wireless receiver system built-in as optional
- 2.4" TFT LCD display with 4 control buttons and battery back-up for menu preset
- 180°Reversible for LCD display
- LCD display switch-off automatically after 60 seconds
- DMX signal monitoring indicator available
- Software up-datable through DMX connectors
- Efficient low noise self adjusting fan cooling system
- Constant temperature readout and management function
- Over heat protection management

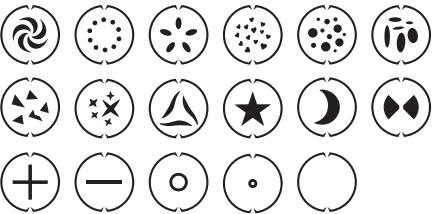
- > Powercon IN/ OUT with power switch and fuse
- > 3-Pin XLR DMX connectors IN/OUT
- > Ip20 protection rating
- > -20~45°C max ambient temperature
- > 2\*1/4 turn fastening Omega Clamps (Adaptable vertically and horizontally)
- > 1\*Safety attachment point

Specifications

Input Voltage:	AC100-240V 50/60Hz
Control Signal:	DMX512, RDM, master-slave and sound activated or auto operation
Control Channel:	14/16 DMX channels
Power Consumption:	230W/270W/330W
Dimensions:	203(D)*348(W)*434(H)mm
Packing Dimensions:	490(D)*370(W)*375(H)mm
Net Weight:	14.00kg
Gross Weight:	16.00kg



Static gobos



Colors

